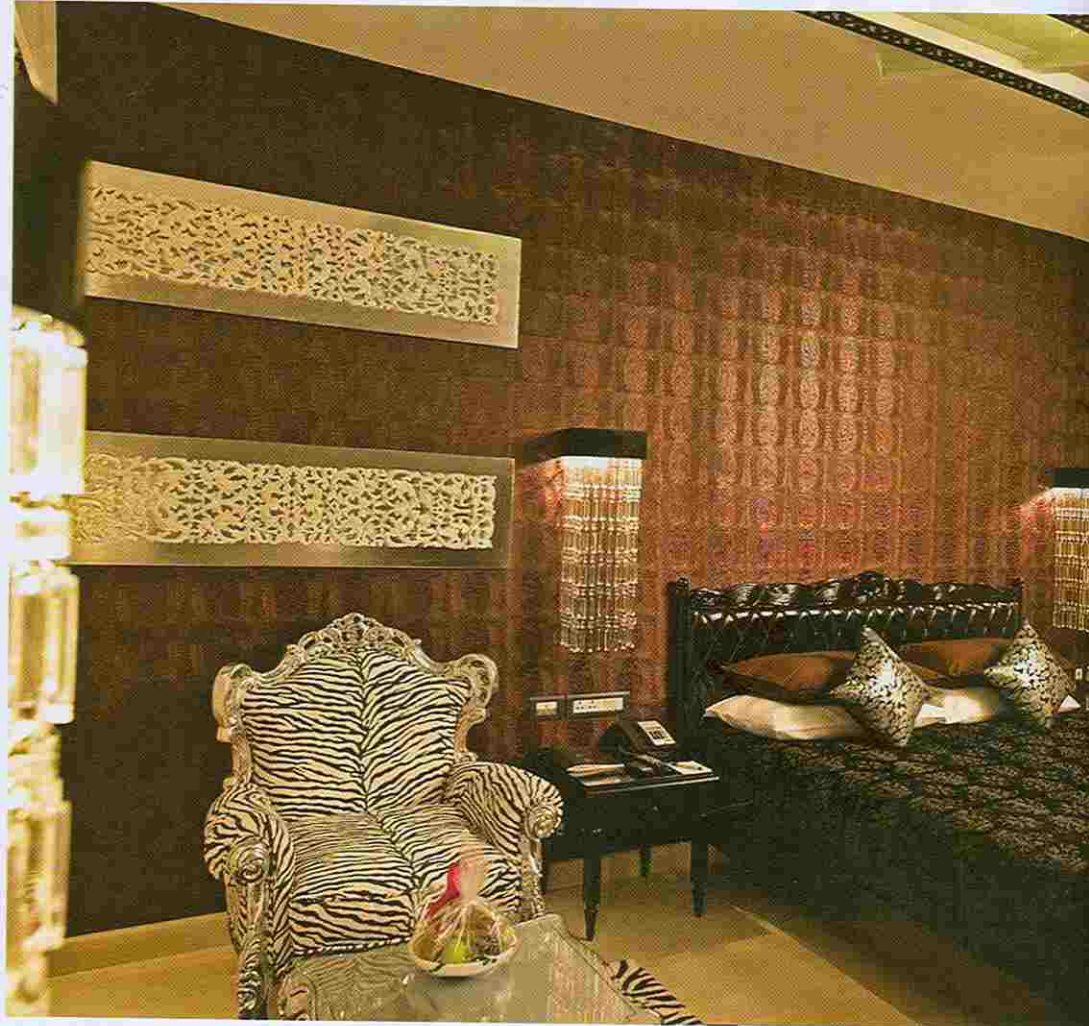


GOODNESS GRACIOUS!

PROJECT DETAILS

Name of the project: Zuri Whitefield
Designer: Priscilla Kamani, with Zuri's in-house design team
Structural engineering: RSP Architect Planners and Engineers Pvt Ltd



ITS OPULENT 'AFRICAN' DESIGN SEEMS ODD FOR A BUSINESS HOTEL, BUT THE ZURI WHITEFIELD IN BENGALURU HAS AN AIR OF GRACIOUS LIVING THAT SLOWLY GROWS ON YOU, FINDS OUT MARIA LOUIS

If you know that Zuri means “good” and “beyond expectations” in Swahili, it’s easy to understand why this 5-star business hotel dares to be different from the competition.

The airy lobby makes a sharp contrast to the black, brown and silver colour scheme running through the Africa-inspired interiors. Dainty gold motifs on the wall form an elegant backdrop to the reception

desk. They are echoed on the glass doors of the lobby and the black-and-white cloth panels that run around the ceiling in lieu of cornices. Black-and-white striped leather sofas and brown leather chairs reiterate the theme.

The lighting fixtures are another talking point, especially the ceiling installations in the lobby. Extremely delicate glass bubbles with droplights in between are

hung in clusters on barely-there wires. There are also ornate chandeliers in the tall porch of the hotel.

Although the overall design is pleasingly modern and neutral, the touches of opulence are too flamboyant to be ignored. For instance, the lift doors are in a glossy gold colour with leaf patterns. Flower, leaf and other garden motifs are recurrent, since the parent company owns rose farms



ITALIAN RHAPSODY

Incanto, the Italian restaurant to the right of the lobby, is the perfect place for a romantic rendezvous. The 3D painting has been executed by South African painters.



FESTIVAL OF LIGHTS

The airy, double-height lobby is a celebration of light. Ornate chandeliers and delicate ceiling installations made of glass bubbles lend grandeur to the comfortable seating.



STAIRWAY TO HEAVEN

Sake, the Pan Asian restaurant on the rooftop, has a live teppanyaki table, sushi bar and cigar lounge. Dinner here would be an experience that would last a lifetime.

in Nairobi. The flower arrangements in the lobby, created with orchids and ornamental plants rather than flowers, are also quite extraordinary.

As the first business hotel in the IT corridor which connects the city to the international Technology Park, Zuri provides the business traveller with up-to-date conference facilities. In addition, the restaurants offer excellent opportunities to mix business with pleasure.

Kahwa, the all-day dining multi-cuisine restaurant with a live pizza oven, is located at the lobby and offers one of the largest buffets for breakfast, lunch and dinner. This open space overlooking the well-lit double-height lobby is filled with interesting décor elements – such as the row of automated fans on three of its walls.

Incanto, the fine dining restaurant on the same level, is a confection of Victorian

white furniture, salmon pink walls, chandeliers with curlicues and an accent wall with a 3D painting executed by South African painters. Its white table service lends itself to long dinners by candlelight – which magically transforms the painting into an Italian fresco.

The pièce de résistance is Sake – the Oriental bar and restaurant perched on the rooftop with a breathtaking view of the city. It has a live teppanyaki table, sushi bar and cigar lounge; and its mouth-watering Japanese, Thai and Chinese delicacies are to die for.

There's also Bling, the hip lounge bar that sports a plush ambience, with wide couches, seating islands with black circular carpets, tables with silver veneers and table runners, and sumptuous black-and-white chairs with patent leather seats. Silver-hued armrests and legs give the

chairs an opulent feel, while the 'bling' element is reinforced by back-lit walls and beaded chains interspersed with droplights suspended from the ceiling.

Thankfully, the rooms are more understated, though the black duvet with silver print is arresting and quite unconventional for a business hotel. Luxurious cushions in chocolate brown, textured wallpaper, snakeskin print in dark grey near the headboard with a mock croc print along the opposite wall, a writing-table and chair in pure white, and two plush chairs in zebra print lend the rooms a distinctive personality.

Three board rooms, a ballroom, an outdoor bar and grill surrounding the swimming-pool, a gym, a spa, a salon, two Presidential Suites and four junior suites complete the list of facilities offered by this upmarket business hotel. **ANI**